

***Directions for use***

**COMPACT 8**

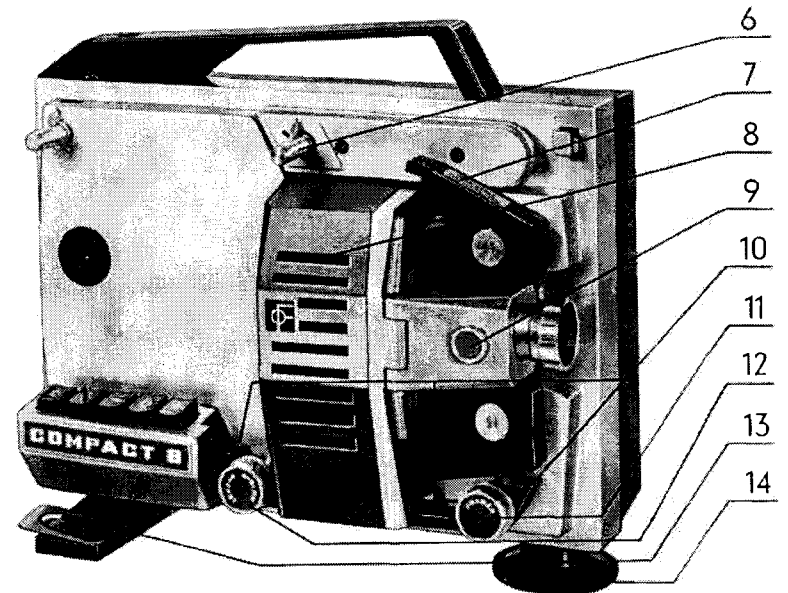
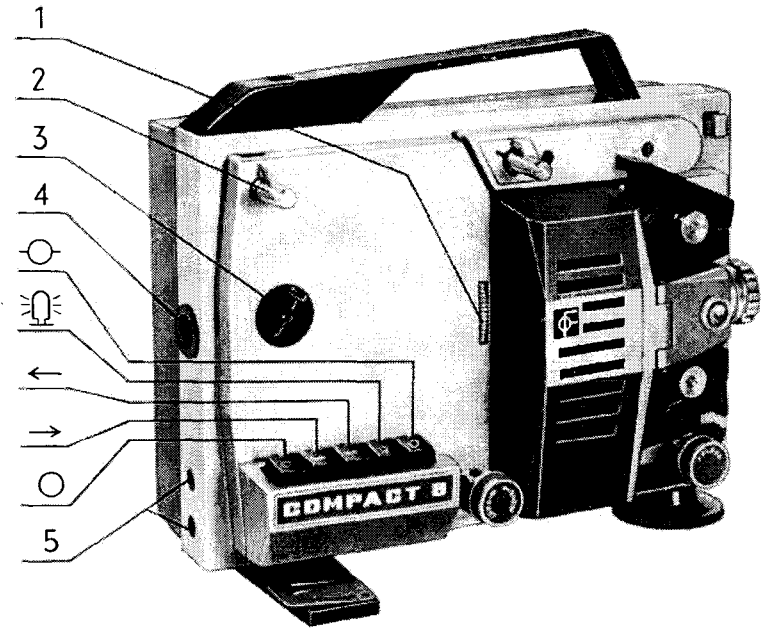
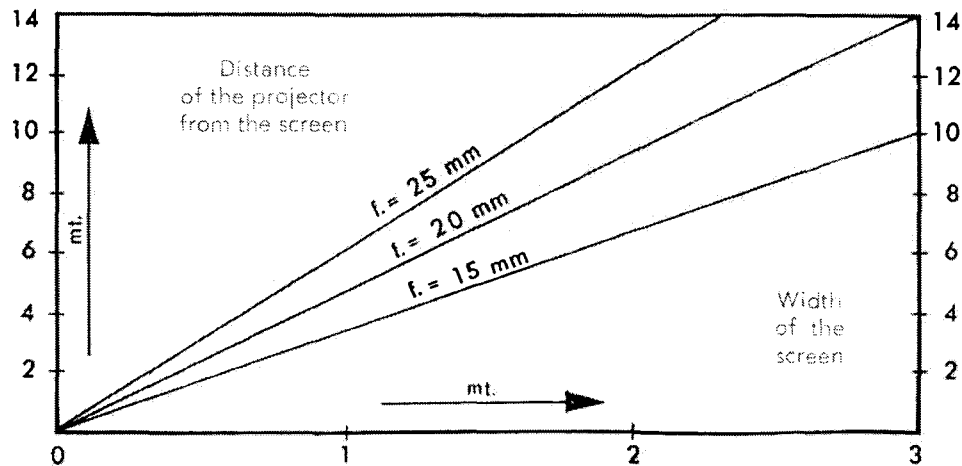
**PROJECTOR**

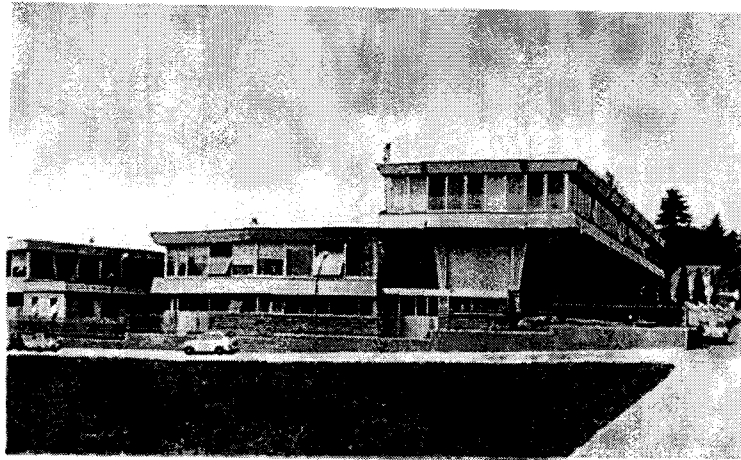


S.P.A. - RIVOLI TORINESE - ITALY

- 1 - Inching knob
- 2 - Take-up spool spindle max. 400 feet.
- 3 - Voltage selector
- 4 - Mains input socket
- 5 - Room light socket - max. 60 Watts.
- 6 - Front spool arm - max. 400 feet
- 7 - Self threading guide
- 8 - Lamphouse cover
- 9 - Micro focussing knob
- 10 - Film guide channel
- 11 - Framing control
- 12 - Speed control
- 13 - Film cutter
- 14 - Height and tilt adjustment
- Stop
- Forward
- ← Reverse and rewind
- ⦿ Lamp
- ⦿ Picture stop

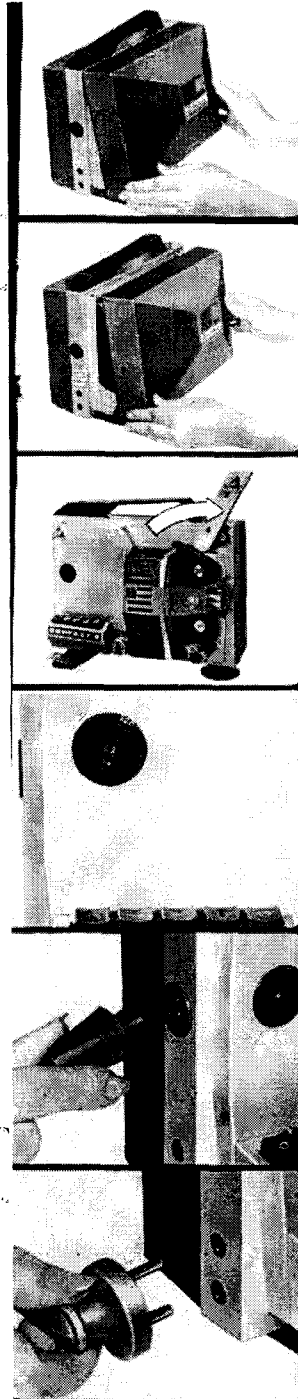
**APPROXIMATE PICTURE WIDTH WITH VARIOUS LENSES**





**COMPACT 8,** projector is a precision instrument that has been rigorously inspected before despatch to you from our modern Turin plant. To ensure years of trouble free projection we recommend you to read these instructions carefully and to observe the simple maintenance procedure that we advise in this booklet.

SILMA S.p.A.



## 1. - GENERAL PREPARATION

REMOVE COVER

REMOVE COVER

RAISE FRONT SPOOL ARM

### VOLTAGE SELECTOR

The voltage selector (3) (110-240 A.C.) is placed above the control panel and should be set to correspond with your mains voltage.

### MAINS AND EARTHING

Insert mains lead into socket (4). The socket is provided with a guide, ensuring correct connection of the plug pins. As the mains lead is equipped with a third (green neutral) wire, on connection to your COMPACT 8 it is automatically earthed.

### ROOM LIGHTING

Your COMPACT 8 is fitted with a room light socket which can, if required, be connected to a table light, or other room light (not exceeding 60 watts). When the projector is switched on, the room light will automatically go out and will light again when the projector is stopped. As this socket (5) is a continental fitting a special adaptor plug is supplied with your projector.

## 2. - FILM LOADING

### SPOOL (400 feet capacity)

Place the loaded spool of film on the front spool arm spindle and push it firmly until the clip engages. In its forward position the spool must revolve in a clock-wise direction and make sure that the sprocket holes of the film are nearest you. The shiny side of the film should face the lens and the dull side should face the lens. Place the unloaded reel on the take-up spool arm spindle (2).

### PREPARATION OF THE FILM

Before threading your film into the COMPACT 8 projector, it is necessary to trim leader portion. This is done by using the cutter (13) fitted on the projector; just line up your film on the guide pins and press.

### AUTOMATIC THREADING

Insert your ready trimmed film into the self threading guide as per picture.

Press down firmly on the self-threading guide (7). The teeth of the top sprocket will take up the film and automatically feed it into the projector gate and lower sprocket. Do not stop pressing on the upper automatic film guide until a sufficient length of film has emerged from the guide channel, to enable the empty spool to be loaded. When you stop pressing the motor also will stop.

**IMPORTANT** - During this operation, no push button of the control panel should be touched. It is also important to ensure that the lensholder is secured during this operation.

### READY FOR PROJECTION

## 3. - PROJECTION

### PROJECTING THE FILM FORWARD

Press the key → (forward) and the motor, and the fan of your COMPACT 8 will start.

### LAMP

By pressing the key (lamp) the 8 V. 50 W. lamp is switched on.

### REVERSE PROJECTION

On pressing the key ← (reverse) you start the projector and fan for reverse projection, then press key (lamp).

### PICTURE STOP

Press key (picture stop) and this will allow you to view any single frame of your film. If when this is done no picture appears, just turn the inching knob (1).

**N.B.** As a protective heat filter automatically protects your film, it will be necessary to re-focus your lens. Projection should be limited to one minute for a single frame.

### AUTOMATIC ADJUSTMENT OF THE FILM LOOP

Defective perforations of the film or bad splicing can cause « picture-jump » during projection. Your COMPACT 8 is able to correct this. Simply press the self-threading guide (7) while the projector is still running, and your picture will be corrected.

### MICROMETRIC FOCUSING

To focus your picture, rotate the lens to the left or to the right until the image is sharp on the screen. Then for ultra fine focussing, use the micrometric knob (9).

### PROJECTION SPEED

Your COMPACT 8 is driven by a motor with continuously variable speeds from approximately 12 to 24 frames per second, by means of a rheostat. To adjust the speed, turn the speed control (12). The standard running speed of 16/18 frames per second is found by turning the knob until correct speed of movement is obtained.

#### FRAME ADJUSTMENT

During projection a line may appear horizontally across the screen (top or bottom). This is known as the « frame line » and can be removed by turning framing control (11) until it disappears.

#### HEIGHT ADJUSTMENT

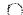
To raise or lower your COMPACT 8 projector, rotate the knurled foot (14).

#### ALIGNMENT


To ensure perfect alignment of your COMPACT 8, just press on the front of the projector and the knurled foot will level automatically.


#### 4. - REWINDING

##### TO STOP THE COMPACT 8

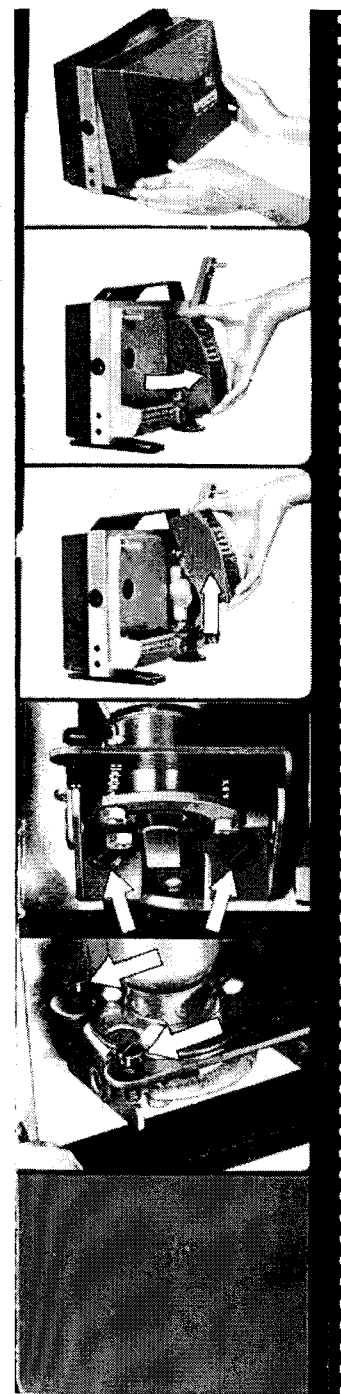
By pressing the key  (stop), the lamp automatically goes out and the motor stops running.

##### RE-WINDING THE FILM

~~When projection is finished, thread the film directly from the back to the front spool, then press key  (reverse). Should the spool slip or stop on rewinding, press the small button on the back of the projector.~~

When projection is finished, thread the film directly from the back to the front spool, then press key  (reverse). Should the spool slip or stop on rewinding, press the small button on the back of the projector.

#### CLOSING THE PROJECTOR



#### CLOSING THE PROJECTOR

#### 5. - CARE AND MAINTENANCE

##### OPENING THE LAMPHOUSE COVER

##### REPLACEMENT OF THE LAMP

The lamp supplied with your COMPACT 8 projector is an 8 volt, 50 watt lamp, and replacements can be obtained from your photographic store. In order to remove the lamp, turn anti-clockwise and the lamp will then free itself automatically.

##### CENTERING OF THE LAMP

Uneven distribution of light is due to the lamp being out of alignment. To correct this fault, use an insulated screwdriver and for vertical of horizontal adjustment turn the screws indicated in the picture until even distribution of light on the screen is obtained.

##### CLEANING THE LENS

The lens should only be cleaned with a special cleaning tissue and if necessary, lens cleaning fluid. To take the lens from its holder, simply pull the small knob on the holder unit and gently ease out.

#### LUBRICATION

After every 4 hours projection it is advisable to lubricate the points indicated in the picture with one or two drops of fine oil.

#### OPENING REAR COVER

To open the rear cover it is necessary first to remove the lamphouse cover and unscrew the milled knob as shown in the picture.

#### CLEANING THE PROJECTOR GATE

Take the lens holder unit between your thumb and fore-fingers and pull gently. It will now swing away, enabling you to clean the gate without hindrance. If, for any reason, it is necessary to take the lens holder off, then release the small pin, which acts as the hinge to the unit, and lift off. Do not use any pointed or metal objects when cleaning.

#### CLEANING LOWER FILM GUIDE CHANNEL

It is advisable to occasionally clean the lower film guide channel (10). To remove and dismantle press as indicated in the picture.



SILMA S.p.A.  
RIVOLI TORINESE  
ITALY